



ELECTRICAL DISTRIBUTION OH/UG CONVERSION PROGRAM EXPERIENCE REPORT

March 1, 2023

PREPARED BY:

J Heffler
CEO
Orbital Project Management
2801 B St #3041 San Diego, CA 92102



TABLE OF CONTENTS

Executive Summary	03
About Our Company	04
Our Expertise	05
Certifications	06
Sample Projects	07
Case Study	08
Management Team	09



EXECUTIVE SUMMARY

WHO WE ARE

Orbital Project Management stands as a woman-owned business that specializes in utilizing existing client software platforms to integrate technology with proper project management and controls as set forth by the PMI. Precise control over budget, schedule and scope become paramount to any project's success and can be more efficiently managed with the correct reporting tools and process workflows. The leadership provided in our managed service shapes collaboration across business units to drive results.

At Orbital Project Management, our leaders bring more to the table than spreadsheets and weekly status updates. They provide confidence in decision making by supplying accurate and up to date data. They supply assurance in project progress by creating real time reporting tools and dashboards. They deliver comfort in knowing that budgets will be spared by using existing enterprise solutions, but more effectively through process efficiencies and workflows.

WHAT WE CAN OFFER

Orbital Project Management provides a complete PMO set up to organizations in need of standardization across all projects. By clearly defining all scope and requirements, building process maps, developing breakdown structures for resources and work, designing KPI dashboards and managing data across the organization proper program management can occur. Future scale-up of production can begin without unnecessary growing pains due to data tracking, real time reporting and continuous process improvement. Projects cannot succeed without proper data management. With up-to-date data, progress is accurately tracked, and critical decisions can be made. Based on needs and available technologies, we recommend and create cost-effective data management solutions to collect and store data, to provide reporting and dashboards, and to support automation. We also provide user training, document all processes, and create data dictionaries and user guides.

We have extensive experience working with SharePoint, SQL Server, Smartsheet, Access, Excel, InfoPath Designer, SQL Server Reporting Services, Power BI, Nintex Workflows and SharePoint Workflows. However, we believe the key to success is not the technology chosen but a well thought out, easy to use, cost effective system where users can clearly and immediately see the benefits.

ABOUT THE COMPANY



Orbital Project Management is a managed service firm that specializes in providing PMO set-up, program and project management, data management as well as project controls to our customers. Established in 2019, the company has managed over **86 miles** of electrical distribution undergrounding.



We believe that our experience and our dedication are key to success. Our Company stands behind its mission statement to provide prompt, precise and professional service when leading complex projects designed for cleaner, safer and more reliable energy across the country.



With a BCSP-certified Safety Trained Supervisor in Construction and a safety plan that includes monthly training that covers construction risks frequently experienced out in the field, Orbital Project Management emphasizes the importance of safety in and out of the office. We believe a project manager versed in all aspects of safety will build a cohesive team that works to eliminate risks while steadily moving a project forward.



At present, Orbital Project Management and its employees still strive to be better and we continue to build a win-win situation for all stakeholders as we drive clean energy usage forward for future generations.



Orbital has quickly become a key partner and contributor to NV5's continued success

-G. Clark, SVP Power Delivery, NV5

OUR EXPERTISE



PMO Set-up



Database Management



Program/Project Management



Process Efficiencies

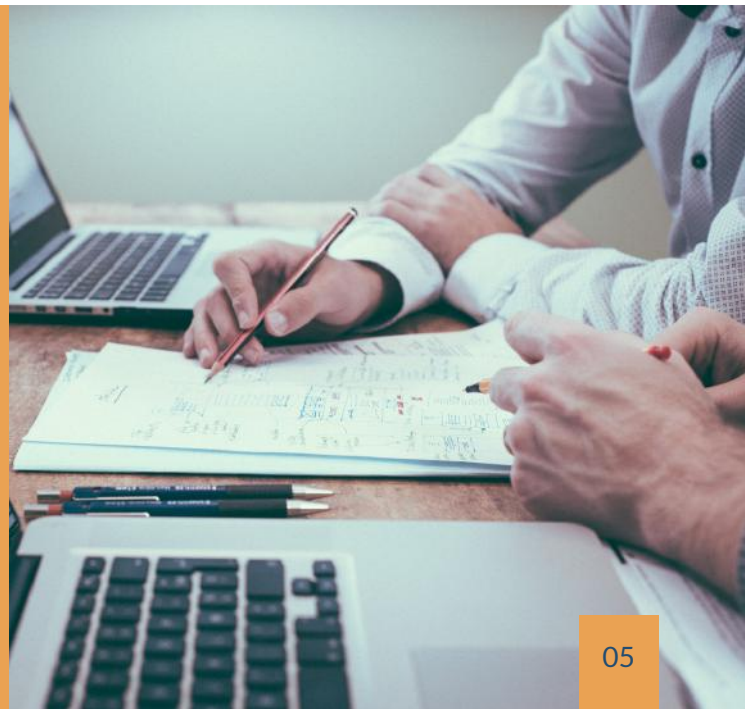


Power BI/Dashboards



Project Controls

Our team consists of Project Management Professional (PMP) certified employees with over 50 combined years of experience managing complex projects. Their expertise ensures a smooth delivery of milestones and confidence in schedule adherence. They have managed multiple projects under SDG&E's Strategic Undergrounding Program totaling just over **86 miles**. We can guarantee that any project assigned shall be in good hands.



CERTIFICATIONS

Orbital Project Management is a certified Disadvantaged Business Enterprise that attracts and retains top talent for our clients. We are proud to be publicly recognized around the country as an emerging business that also takes care of its employees. We're competitive for our clients but supportive of professional growth. Our people love what they do, making them great to work with.



Women Owned Business, Supplier Clearinghouse | since 2020

Recognized by the California Public Utilities Commission, The Supplier Clearinghouse verifies the eligibility of women, minority and LGBT-owned business enterprises.



Diverse Business Enterprise, LA Metro | since 2020

Certified both as a Diverse Business Enterprise and a Small Business Enterprise by LA Metro as part of the California Unified Certification Program.



Veteran Owned Small Business, Veteran's Affairs Office | since 2020

Having served in the United States Navy, the Veteran's Administration has certified Orbital Project Management as veteran-owned. In addition, 33% of the staff have served in the military.



Woman Business Enterprise, WBENC | since 2023

Recognized by vendors nationwide, The Women Business Enterprise Council verifies the eligibility of women-owned business enterprises.



Project Management Professional, San Diego | 2020

All project managers employed by Orbital Project Management are certified as Project Management Professionals by the Project Management Institute.

SAMPLE PROJECTS



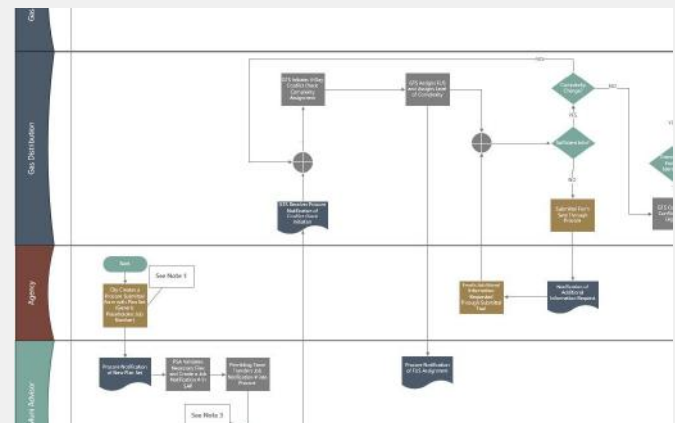
Strategic Undergrounding - SDG&E

Over **86 miles** of design and engineering services managed in converting Tier 3 and Tier 2 electrical distribution power lines to underground services located in high fire threat districts as part of the Wildfire Mitigation Program for SDG&E.



Power BI and Dashboard Set-up - SoCalGas

Initial set-up and maintenance of databases, reporting tools, and dashboards.



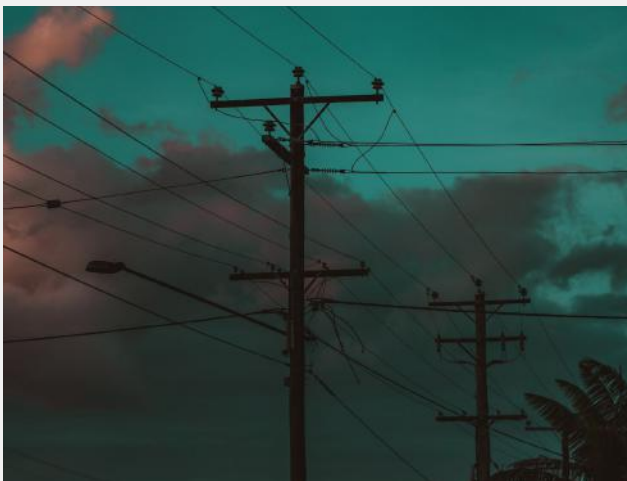
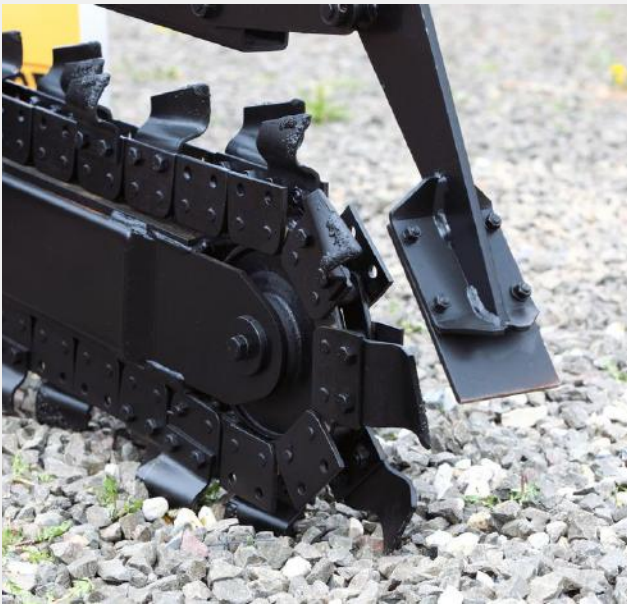
Conflict Check Process Improvement - SDG&E

Process mapping, presentations, decision trees and other graphic tools to aid in the implementation of a new and improved process that involved utilizing Procore as a software solution.

CASE STUDY

▶ BACKGROUND

In an effort to stave Public Safety Power Shut-offs located in rural areas prone to wildfires and restore positive customer relations, a major southern California utility initiated a pilot program to underground electric distribution power lines. A design and engineering firm was tasked with contributing towards their 2020 goal of 20 miles.



▶ CHALLENGE

Because the location to underground was exclusively rural, coordination between agencies became the critical focus to remain on schedule. Each circuit would require permitting, land rights, an environmental study, a geotechnical report, geospatial imagery, Powerline System CAD modeling, underground utility location markout and potholing, as well as face to face customer relations management.

In addition to managing the timely coordination of each external service, the need for the internal coordination of electric and civil design for a unified design was also apparent. Scoping method improvements and aggressive timelines were identified.

▶ SOLUTION

Orbital Project Management mapped processes, developed a RACI chart to communicate functional responsibilities, centralized the data collection location as well as streamlined its collection methods, improved overall communications so that dashboards and real-time reporting could be implemented for better decision-making within the design and engineering firm. In addition, planning and scoping improvements were made so that clear expectations could be communicated to the utility client for better schedule adherence. The data collected was then fed to the utility for internal KPI tracking towards mileage goals.

▶ RESULT

The design and engineering firm supplied 21.7 miles of the 20 mile goal target in 2020 three months ahead of schedule, thus securing its position as the go-to design and engineering firm for the utility's Strategic Undergrounding Program for the next 5 years.

MANAGEMENT TEAM

1

Steve Heffler, PMP

Steve is a highly motivated, goal oriented, self-starting and dedicated professional with 27 years of experience in maintenance, operations, project management and training in power generation, transmission, and distribution. Over 16 years as an Electrical Technician/Shutdown Reactor Operator/Propulsion Plant Watch Supervisor in the U.S. Naval Nuclear Power Program. Seventeen years direct supervisory experience in positions of leadership and responsibility relating to maintenance, planning, safety, training, power plant operations, power transmission and distribution. More than six years of supervisory and management experience in transmission and distribution operations with SCE and Pacific Power. All positions held have relied on integrated plant, system and process knowledge for successful and safe decision making and operation.

2

Susie McCollum, PMP

Susie's extensive data management background gives her a unique ability to manage projects more efficiently. Her project controls experience includes budget management, WBS/OBS, earned value analysis, QA/QC, document control and risk assessment. Susie is an expert in Power BI and dashboard generation for real-time data reporting.

3

Rowena Agustin, PE

Rowena has 19+ years of experience helping San Diego Gas and Electric achieve their Transmission Program goals by developing/improving methods, analyzing workflows, and performing regulatory reviews. She is a California native with deep experience in community volunteerism with a passion for giving back and supporting the next generation of engineers.

4

Kelly Warren, Safety Manager, BCSP Certified STSC

Kelly is a licensed healthcare professional as well as a BCSP-certified Safety Trained Supervisor in Construction. She has a broad range of work experience as an HR analyst, labor relations bargaining team member, ICU nurse, and substitute teacher as a result of her past military spouse status. Kelly utilizes her commitment to the environment and humanity to develop outreach ideas that will benefit the companies and communities served.

5

Angie Tran, SAP Specialist

Angie has over 15 years of experience implementing enterprise resource planning across multiple industries. Pivoting from healthcare to infrastructure and construction, she has a solid understanding of SAP capabilities for diverse applications. Angie ensures timely and efficient information availability and transfer from the field to decision makers.



CONTACT US

Email

Contract Management: jheffler@orbitalpm.com

PMO Set-up and Operations: sheffler@orbitalpm.com

Data Management: smccollum@orbitalpm.com

Process Improvement and Quality Control: nmerritt@orbitalpm.com

Safety Management: kwarren@orbitalpm.com

Social Media

Follow us on Linked-in:

Orbital Project Management, LLC

Jennifer Heffler

Phone

Contract Management: 559-750-9340

Operations: 559-515-3840